

eID4U: eID for Universities

Antonio Lioy

< lioy @ polito.it >

Politecnico di Torino

Dip. Automatica e Informatica

eID4U : motivation and partners

- **eIDAS nodes are connected to the national eID schema using MS-specific solutions**
 - but few (if any) service providers are connected
- **eID4U aims to enable the usage of eIDAS-compliant national eIDs of participating Member States (MS) in a selected set of eIDAS-enabled academic service**
- **partners:**
 - Politecnico di Torino (POLITO), Italy – Coordinator of project
 - Jožef Stefan Institute (JSI), Slovenia
 - Technische Universität Graz (TUG), Austria
 - Universidade de Lisboa (ULISBOA), Portugal
 - Universidad Politécnica de Madrid (UPM), Spain

eID4U: expected results

- **definition of academic attributes**
 - as needed by the proposed services
- **study on the problem of “foreign” attributes**
 - attributes issued in a third country
- **eIDAS nodes enabled/updated with support for academic attributes**
 - and related interoperability tests
- **design, implement and test a selected set of eIDAS-enabled academic services:**
 - eRegistration, eLogin, eAccess
- **validation of the extended services with real users**

eIDAS-enabled academic services (I)

■ eIDAS-enabled eRegistration

- eRegistration for (incoming) Erasmus students
 - less data to be verified, faster procedure
- eRegistration for individual courses: targeted to (foreign) students and academic staff
 - access to teaching portal containing course materials, lab exercises, homeworks, news, or reserved areas to upload and maintain thesis work
- are the attributes for naturalPerson sufficient?

■ eIDAS-enabled eLogin

- permit foreign students with eIDAS credentials to access, different academic services (possibly through SSO)
- also for local credential recovery (help-desk simplification)

eIDAS-enabled services (II)

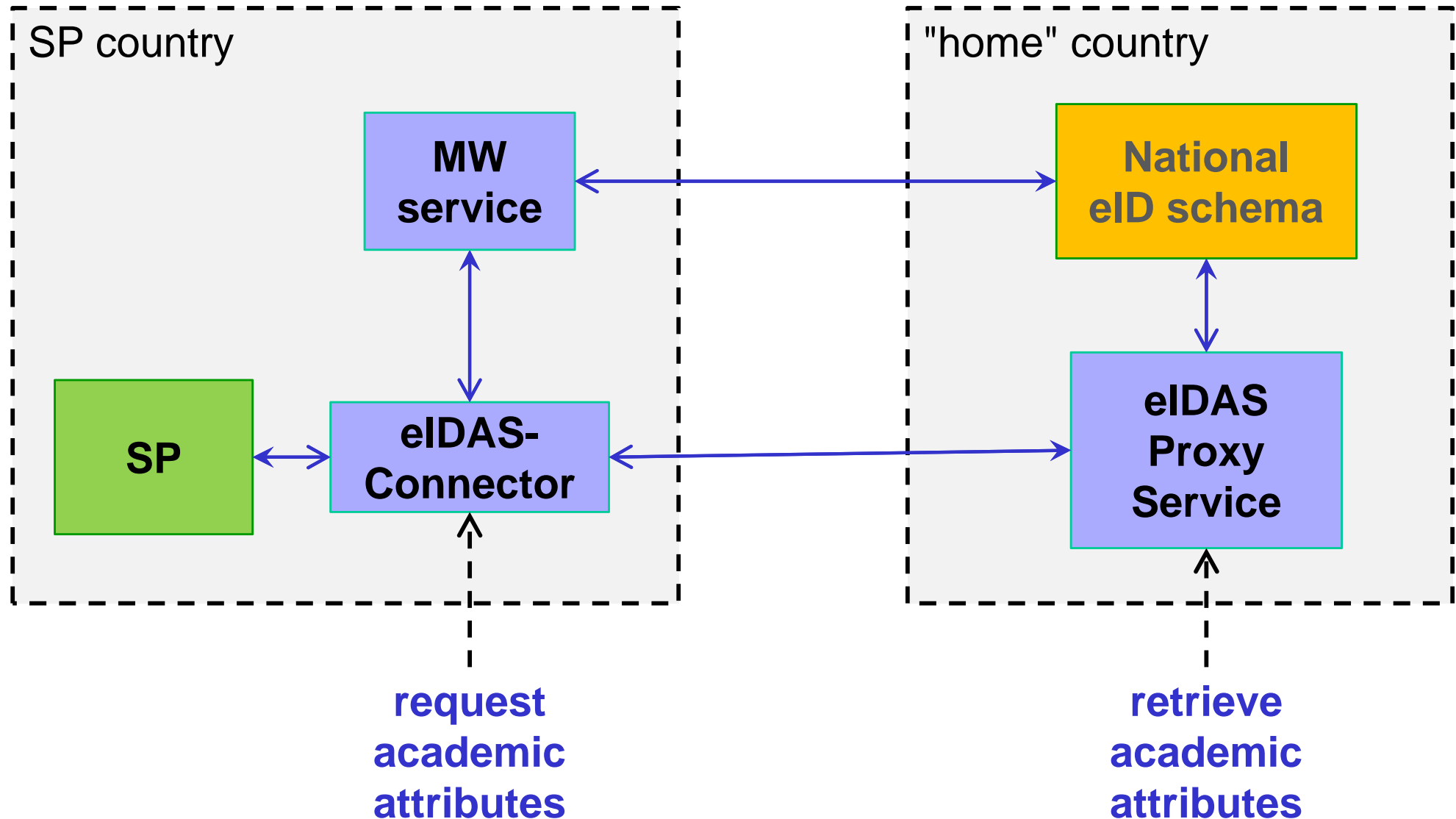
■ eAccess

- students/staff typically authenticate for WiFi access with their university credentials through the eduROAM network
- the proposed service aims to provide WiFi access to other persons that are not part of the academic system (e.g. industrial companies, delegations, PA persons) that visit universities for various events (e.g. project meetings, conference) based on eIDAS credentials
- most likely implemented through a captive portal
 - need for attribute selection and consent

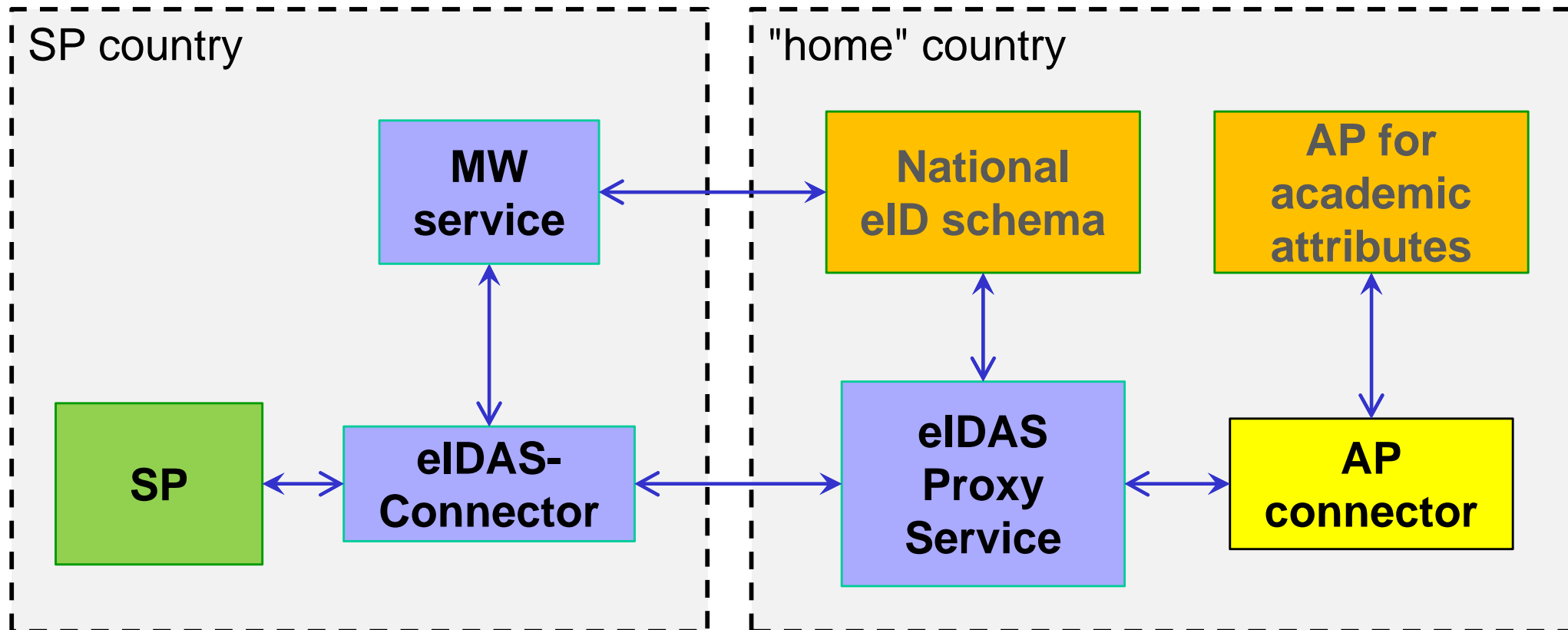
The problem of 'foreign attributes'

- **study the problem of “foreign attributes” and design a solution for their retrieval through eIDAS**
- **foreign = neither the citizen's MS nor the SP's one**
 - who is the requestor? which kind of authentication?
- **result expected: in-depth research/survey on academic service requiring such “foreign attributes”**
 - model(s)
 - liability/legal issues, user consent
 - technical issues:
 - analyse eIDAS interface and propose a change (if needed) to allow retrieval of these attributes
 - this could lead to a virtual bag of attributes for each citizen
- **note: no plan to implement support for “foreign attributes”**

The eIDAS infrastructure (current)



AP connector



AP Connector

- **exploited by applicants acting as AP that fulfill one of the conditions:**
 - their national eID scheme does not provide academic attributes (together with the eIDAS minimum data set attributes for natural persons)
 - do not have a specific solution for mapping/filtering of academic attributes from MS specific format to eIDAS
- **could be composed of:**
 - a common part (for example for AP selection, attribute retrieval)
 - a specific part to be implemented by applicants according to the specific solution for attribute handling